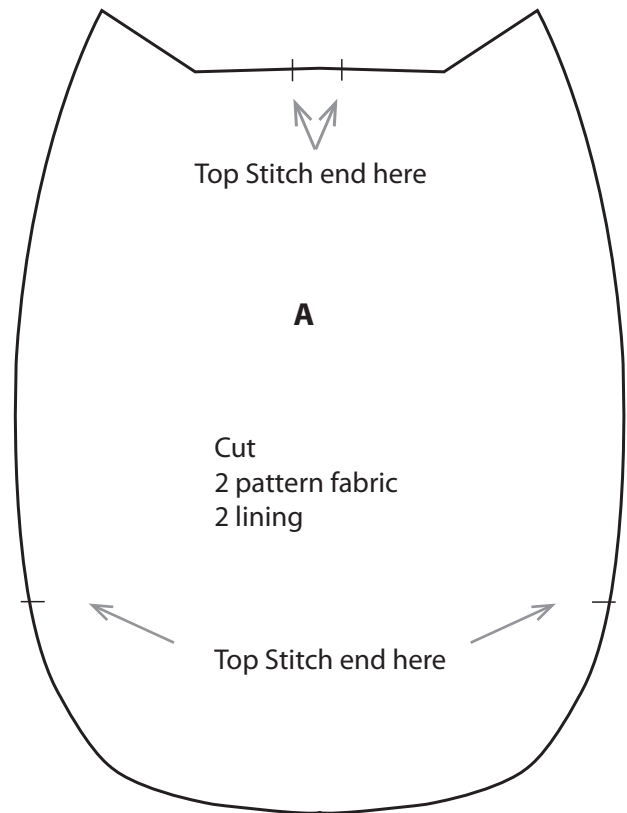
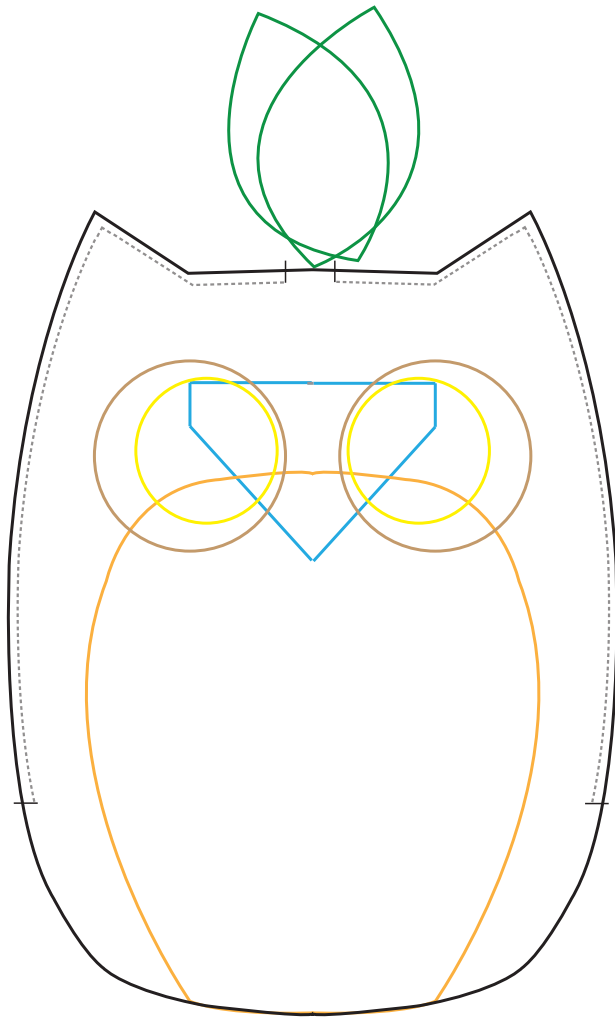


Owl Key Chain Holder

paper pattern

<http://www.craftpassion.com>

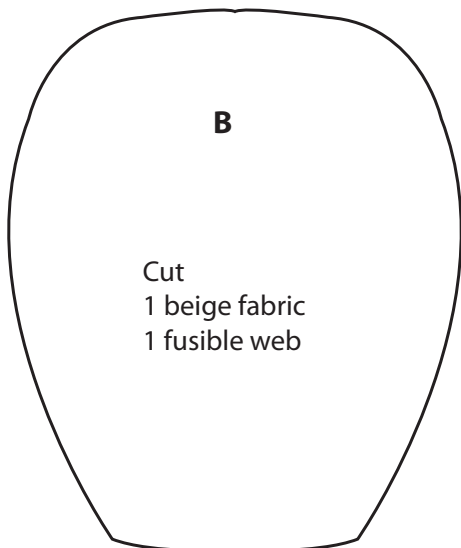


Top Stitch end here

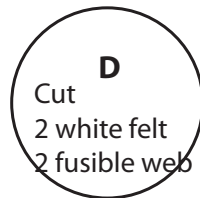
A

Cut
2 pattern fabric
2 lining

Top Stitch end here



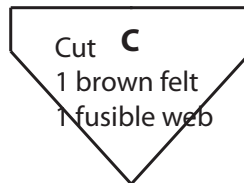
Cut
1 beige fabric
1 fusible web



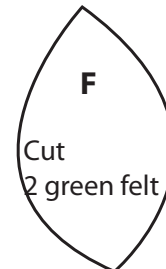
Cut
2 white felt
2 fusible web



Cut
2 beige felt
2 fusible web



Cut
1 brown felt
1 fusible web



Cut
2 green felt

Seam Allowance: 1/4" on pattern A

Free sewing & embroidery pattern.
Designed & drawn by Craft Passion.
Copyright © craftpassion.com
Meant for hobby and personal use only. Do not sell.