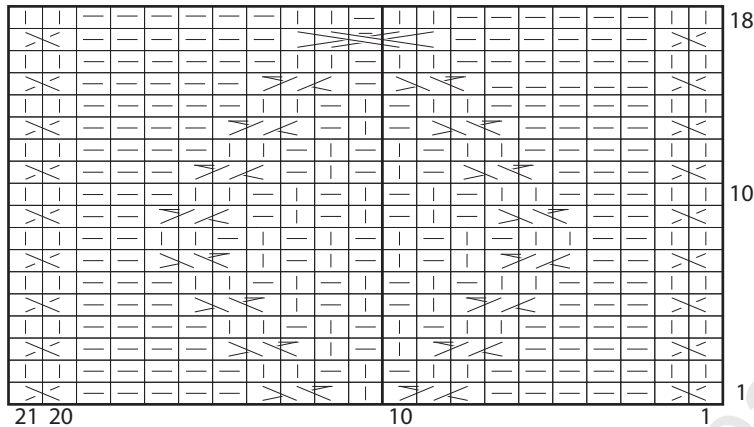




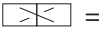





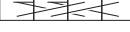

# Shawl Collar Cable Pullover Knit Pattern

<http://www.craftpassion.com/?p=36214>

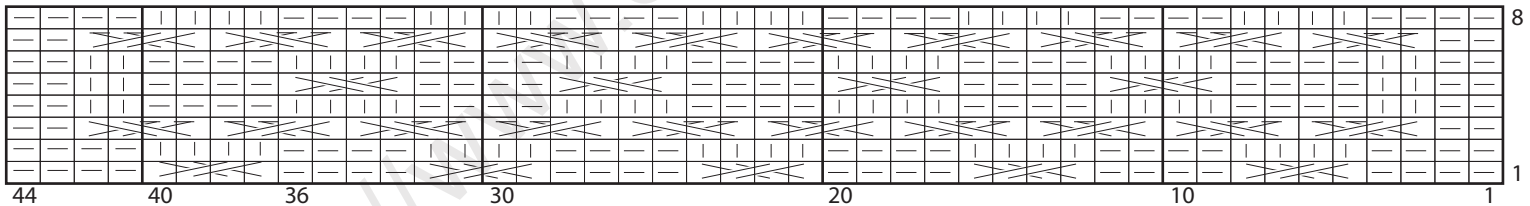
Panel Patt A (21 sts)



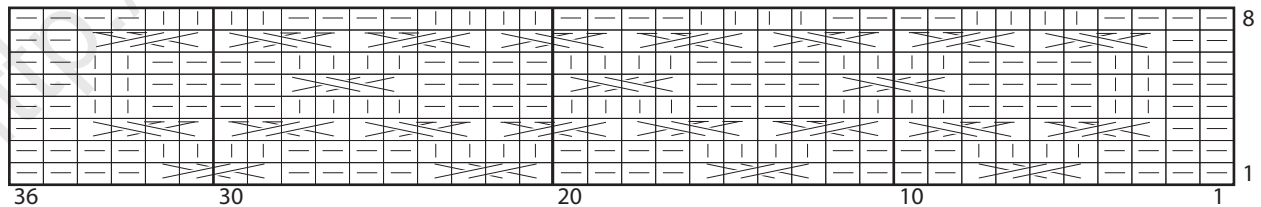
## KEY

-  = Knit on RS rows. Purl on WS rows
-  = Purl on RS rows. Knit on WS rows
-  = TW2L
-  = T3B
-  = T3F
-  = C5F
-  = C4B
-  = C4F
-  = T4B
-  = T4F

Panel Patt B (44 sts)



Panel Patt B (36 sts)



Copyright © craftpassion.com  
Meant for hobby and personal use only.  
Do not sell this free pattern.