


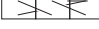

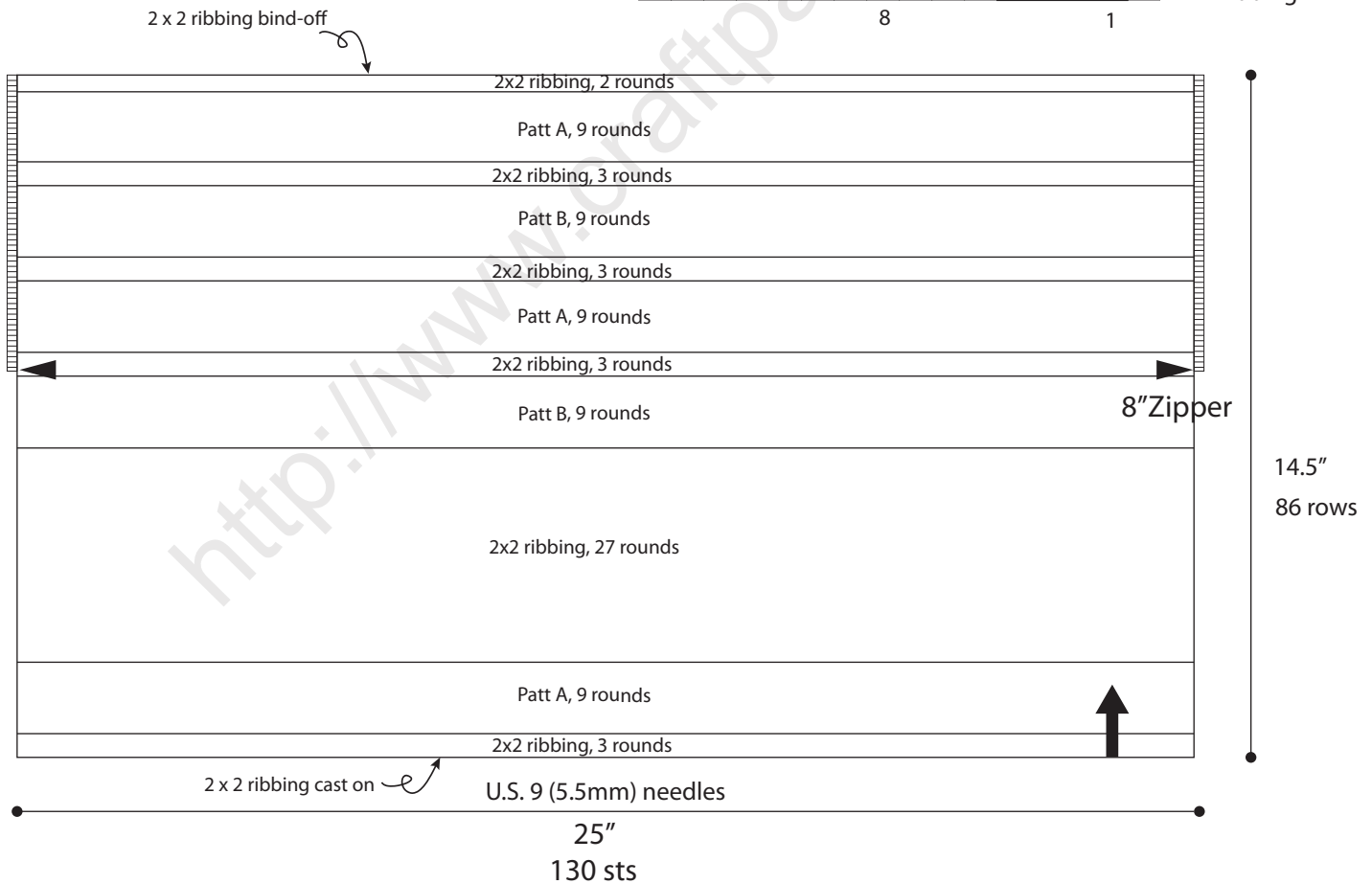
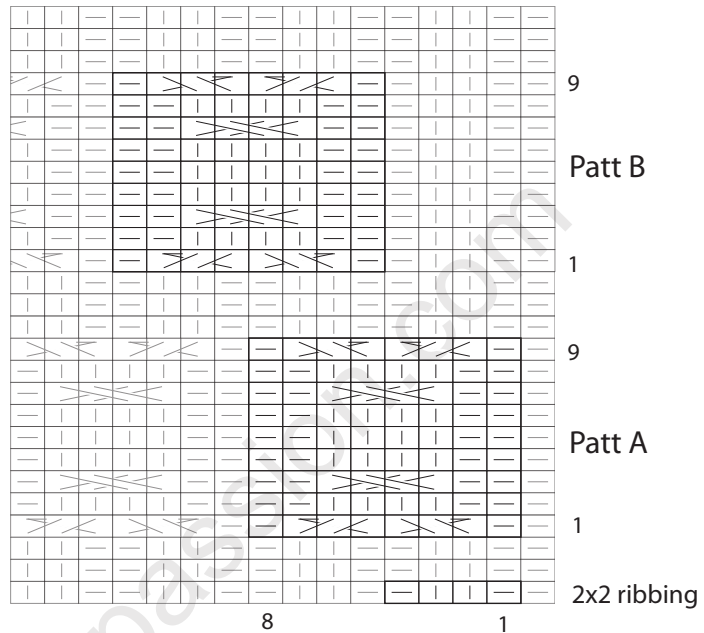


Cable Knit Zipper Cowl Knitting Pattern

Details @ <http://www.craftpassion.com/?p=38933>

KEY

-  = Knit on RS rows. Purl on WS rows
-  = Purl on RS rows. Knit on WS rows
-  = T3B
-  = T3F
-  = C4F



Copyright © craftpassion.com
Meant for hobby and personal use only.
Do not sell this free pattern.